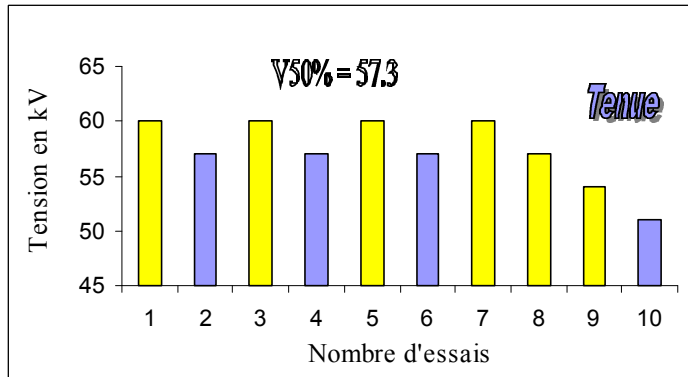


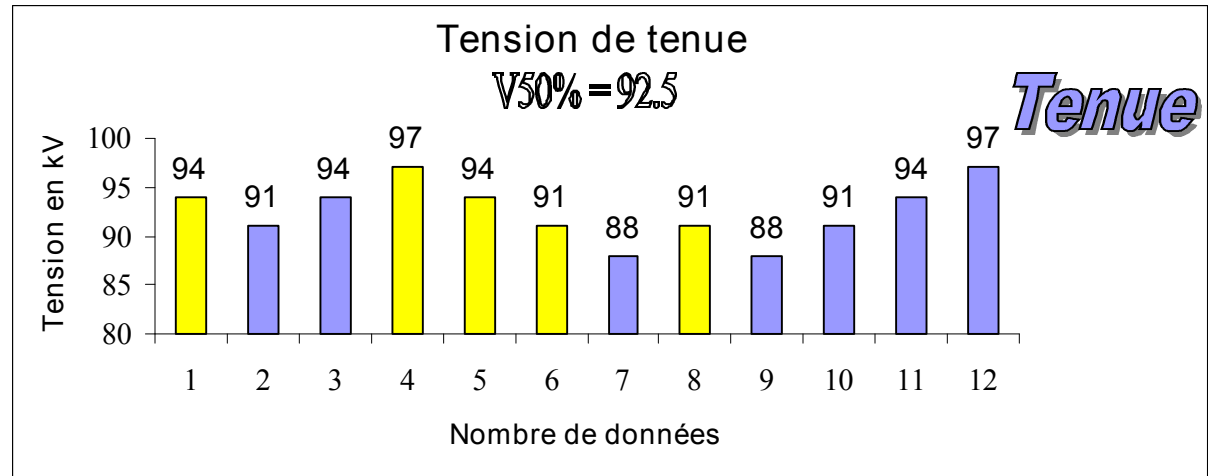
- 1. Gicleurs
- 2. Ventilateurs
- 3. Boîte de Venturi

- 4. Systèmes oscillatoires
- 5. Système de la haute tension
- 6. Chaîne d'isolateurs
- 7. Plafond en grille métallique
- 8. Cylindre témoin
- 9. Systèmes d'acquisition

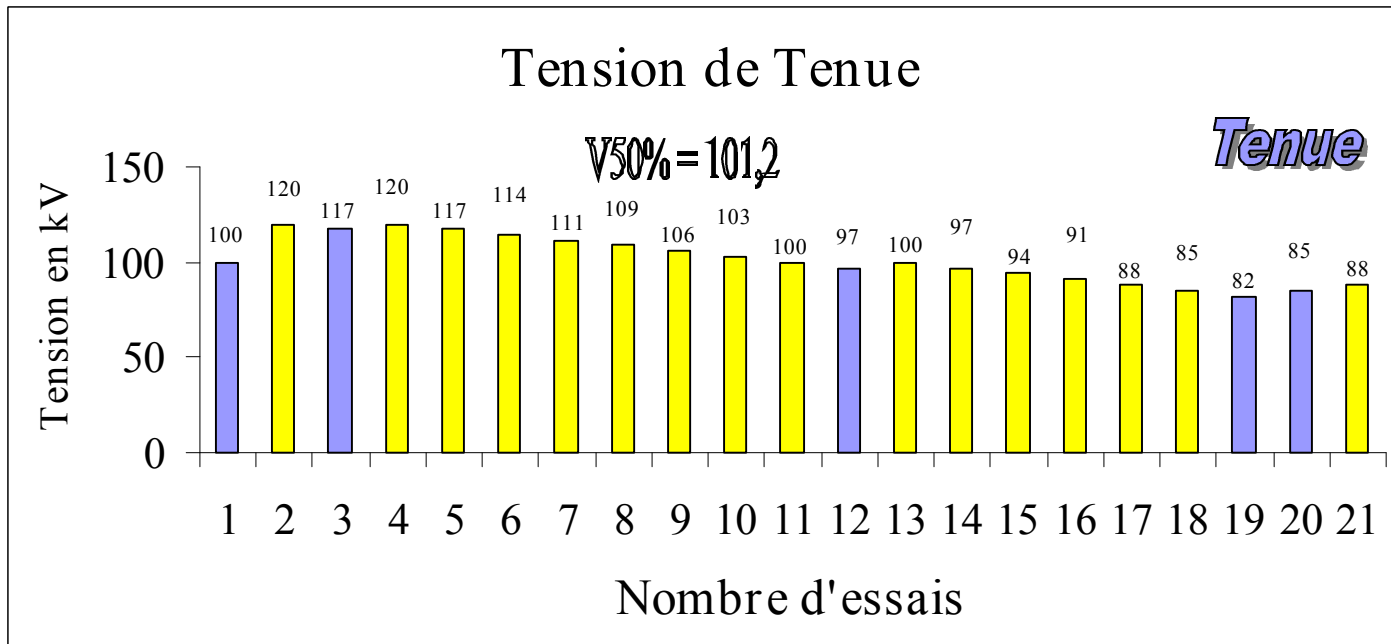




d = 24,5 cm



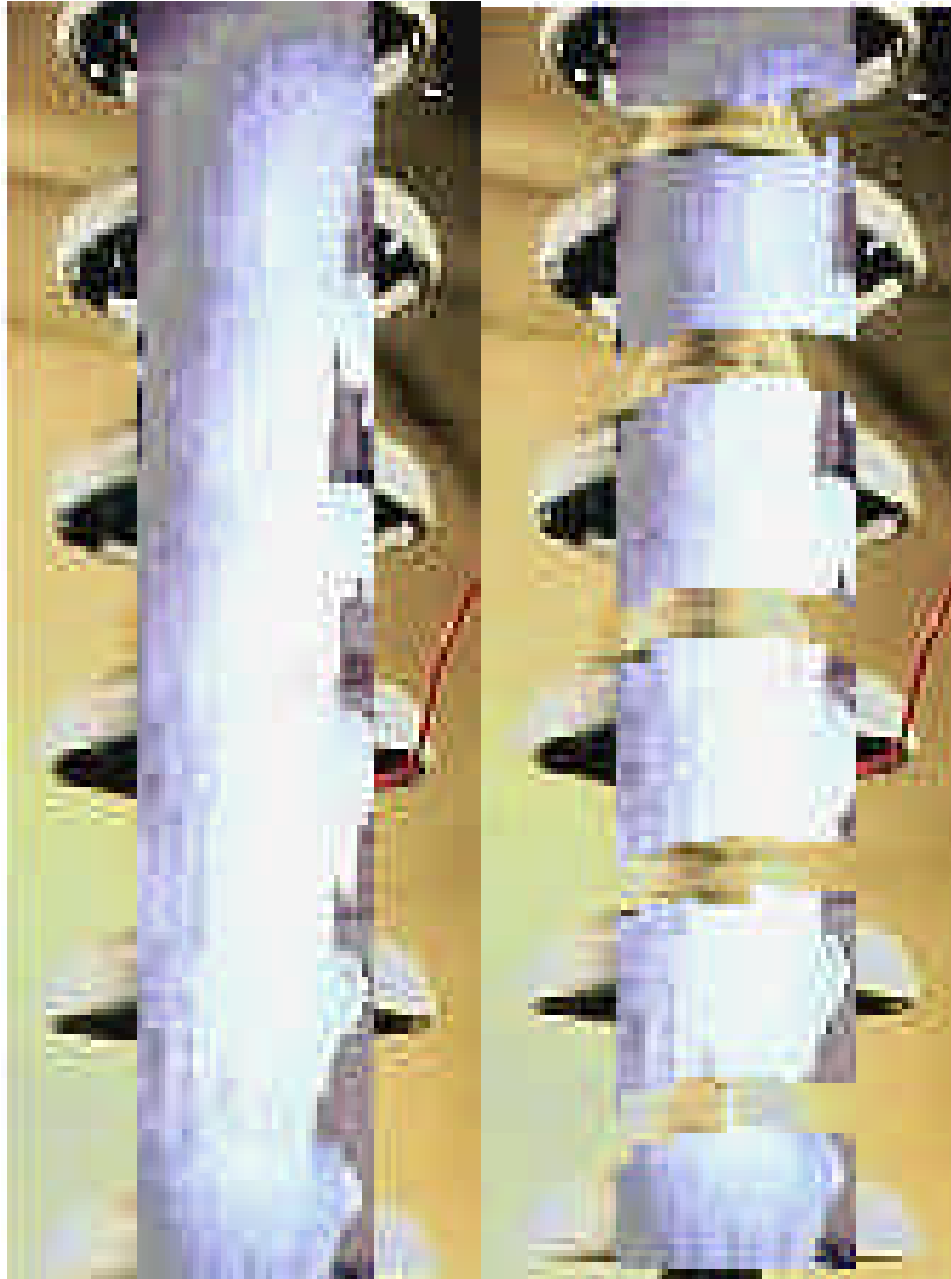
d = 15 cm



d = 10 cm

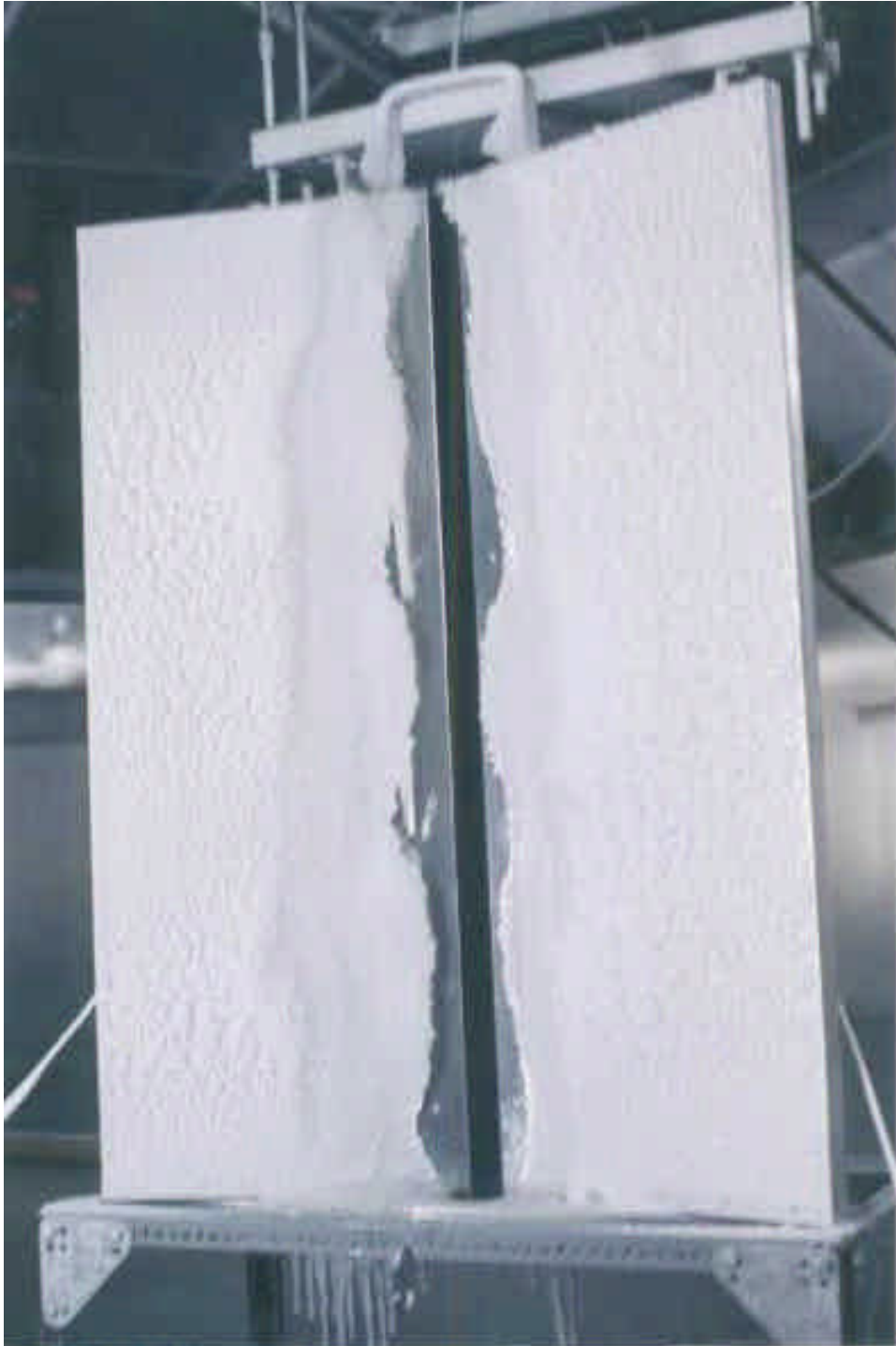
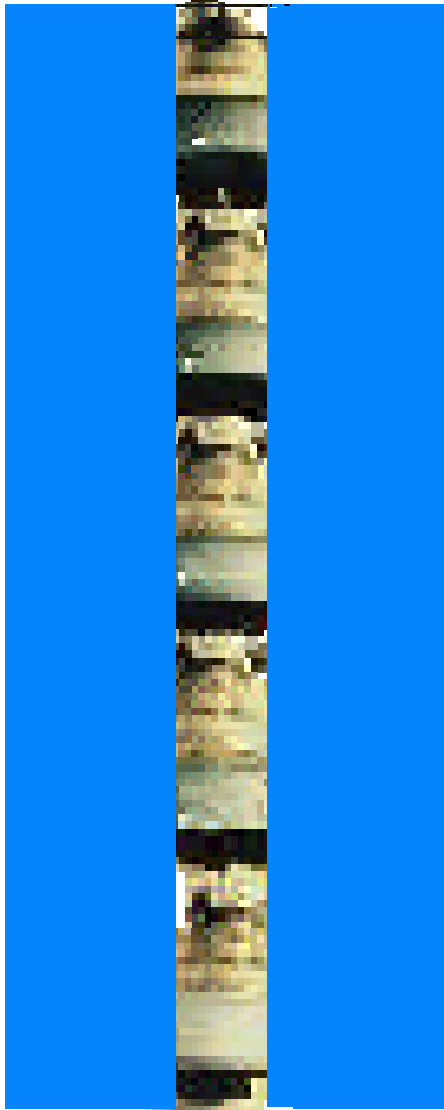
Résultats : $V_{tm} = f(d)$

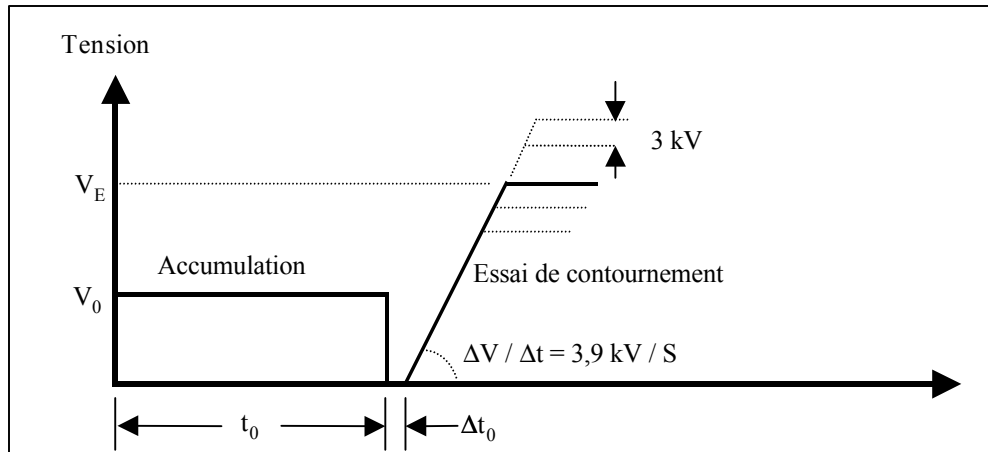




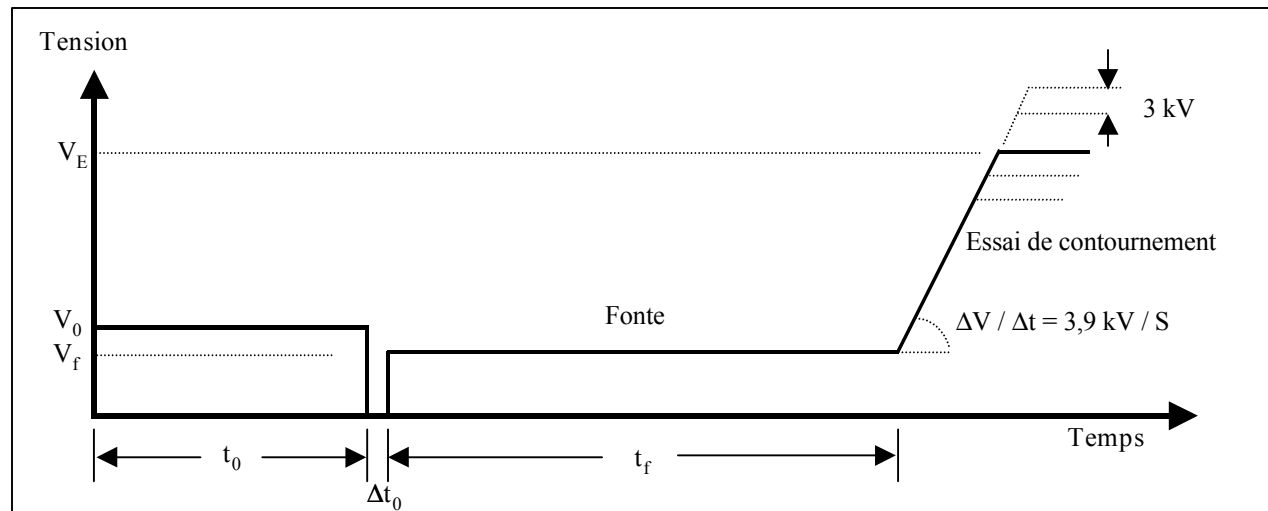
Prévision : Manipulation du longueur de glaçons







Régime d'accumulation



Régime de fonte

Méthodes de mesure

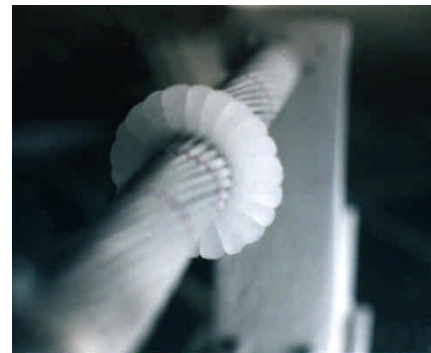




Avec glace, $L = 24,5$ cm



Sans glace



Avec glace, $L = 2$ cm

Cylindre témoin

